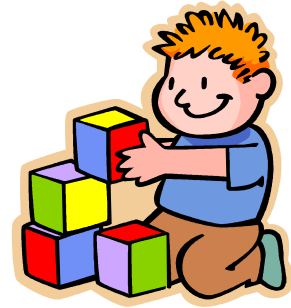
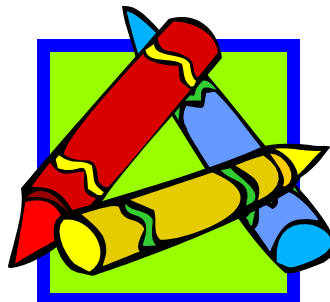
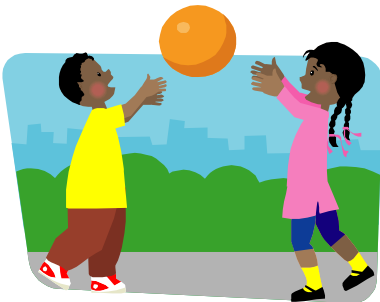




Welcome to Fairstead Community Primary and Nursery School

Nursery Information and Welcome Pack



Contact Details

Fairstead Community Primary and Nursery School.
William Booth Road,
King's Lynn,
Norfolk.
PE30 4RR

Telephone: 01553 774666

Email: office@fairstead.norfolk.sch.uk

Opening Hours

Monday – Friday	8.45am to 11.45am
Monday – Friday	12.00pm to 3.00pm

Children will be looked after between 11.45pm and 12pm if they stay for an all-day session.

We are able to offer some flexible sessions during school hours. Full time places are also available.

AIMS

We aim to provide a happy, secure and welcoming environment to every child and build a positive partnership between home and nursery. Staff get to know children by observation, interaction and talking to parents. Staff wish to work with parents to promote children's learning and well-being in a happy atmosphere of play and discovery. We will provide stimulating and challenging opportunities for children to learn through first-hand experience. We aim to ensure that all children have access to a broad and balanced curriculum irrespective of gender, social origin, or any special educational need.



Daily Timetable

Welcome

Children and parents are welcomed into Nursery and are able to spend time looking at their children's Learning Journey's and join in their play. Staff are available to talk to parents during this time.

Registration and Carpet time

Children will settle on the carpet to talk about what will be happening in their session. Time for children to talk through anything of interest to them. A teacher led session will take place concentrating on one of the seven areas of learning.

Activities

Children will be able to choose from a wide variety of activities both inside and in the outdoor area. Large hall time and use of the multi-use games areas also takes place. We have use of a fabulous large playground, trim trail, pirate ship, wildlife garden and sensory garden plus much more!

A short session where the children will work together with the teacher on new learning will also happen.

Snack Time

Children will be encouraged to tidy their equipment away, go to the toilet and wash their hands ready for snack. They will then choose a healthy snack and water or milk. Children are able to access a healthy fruit and drink throughout the whole session.

Tidy Up Time

Children are encouraged to help tidy away their equipment. Children will then come together on the carpet for songs, stories, rhymes and to talk about their day.

Home Time

Parents arrive to collect their children.

About Our Nursery

The Nursery class has its own outside play area which is shared with the reception classes and we have use of the school's facilities including the halls, library and outside trim trails.

The School employs a qualified Nursery teacher and support staff to ensure the children attending the nursery are given an excellent start to their education.

The curriculum is planned carefully to provide a wide range of exciting play opportunities that are linked to the children's own interests and next steps of learning. Staff work with the children as a whole class, in small groups and on a one to one basis. This ensures that activities are tailored to meet children's individual needs and gives opportunities for each child to be supported and extended where appropriate. Staff also assess the children regularly so that they can quickly identify areas where children need extra help or show particular strengths which can be encouraged.

Our Nursery offers education and care for children over the age of 3 until they start reception.

Key Person

Your child will have a Key person who will make sure that your child's learning and care is tailored to their own individual needs. Your child's Key person is the Nursery Teacher who will support parents in guiding their children's learning at home. The Key person is also there to help families engage with more specialist support if needed.

Funding and Fees

Government funding for five free sessions per week is available for all three and four year olds from the term following their 3rd birthday. Some working families will be eligible for 30 hours free childcare. You can find out if you are eligible at

www.childcare-support.tax.service.gov.uk

You can also use this website to find out if you are eligible for tax free childcare. This allows working families to claim 20% of childcare costs back from the government.

There is the opportunity to pay for extra sessions if spaces are available. Please ask at the school office for current fees. Bills are sent out at the beginning of each half-term. You can either pay the full amount in receipt of the bill, or on a weekly basis in advance of the session. If no payment is received for the session your child will not be able to attend. All money is to be paid into the school office where a receipt will be given.

Late collection of your child from Nursery will incur a fee of £5.00 per 15 minutes late.

A copy of our charging policy, admissions policy and complaints policy is available on our website or upon request.

Holidays and Sickness

If your child is unwell or you take your child out of nursery during term time, fees must still be paid.

Toilet Training

All children should be toilet trained and be able to use the toilet independently before starting nursery. We suggest that they wear trousers or skirts that make it easier for them to use the toilet independently.

FOUNDATION STAGE CURRICULUM

The nursery staff work as a team to plan and deliver the 'Early Years Foundation Stage' curriculum through the 7 different areas of learning. Children entering Nursery will concentrate on the three prime area's before moving onto specific areas.

PRIME AREAS

Personal, Social and Emotional Development. We develop the children's independence and confidence as well as an ability to play co-operatively and become part of a larger group.



Our families often come and join in our activities.



We always play nicely and share.

Communication and Language. This focuses on development in the skills of speaking and listening, understanding and speaking.



We are fantastic at drawing!

We like listening to stories
both inside and outdoors!

Physical Development activities are planned that enable the child to develop mobility and manipulative skills. They will learn about taking care of their own needs and keeping healthy.



"I am higher than you".



The trim trail keeps us fit and healthy.

SPECIFIC AREAS

Mathematics. Practical activities are designed to promote understanding of mathematical concepts and use of apparatus in play situations. Children will become aware of shape, ordering, sequencing and counting.



Working together is fun.



We build and balance, making
castles and towers!

February 2019

Understanding the World. Children develop understanding and knowledge of their environment and the world around them. They develop a sense of the past. This provides the foundations for science, technology, history and geography.

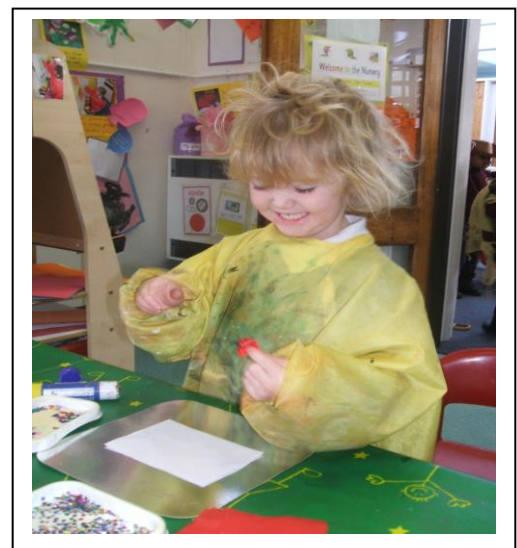


We love to explore outdoors!



“The bark is all scratchy”

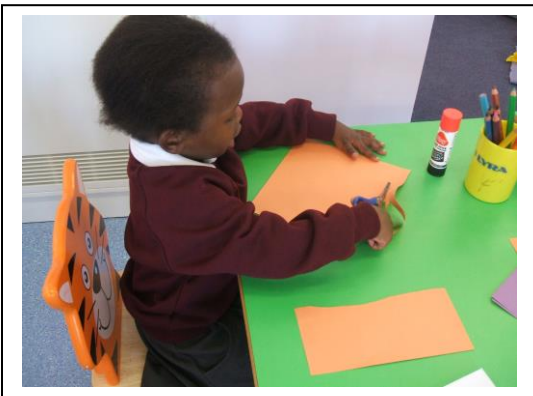
Expressive Arts and Design. Children are encouraged to develop their imagination and to express ideas in creative ways, particularly in art and music.



We cut up lots of healthy foods to eat.

Creating a masterpiece!

Literacy Children are encouraged to develop conversational skills and listen to stories, rhymes and poems. They will foster an appreciation of books and acquire book skills, developing the skills needed to become writers.



Using scissors makes our fingers strong.



We love to write!!

Children can choose from a wide range of activities with a strong emphasis on learning through play. We believe that children learn and remember by “doing” and much of our work comprises practical first hand opportunities and experiences

Learning Journey

Your child will have a learning journey where staff record their learning and progress in Nursery. This book is available in Nursery for you to share. We positively encourage parents to contribute to their child's learning journey. Staff will supply a 'Wow' form for you to record any 'Wow' moments of learning you observe. More information for parents on the EYFS can be found at

www.foundationyears.org.uk

Fruit

Snack consists of milk or water to drink and selection of fruit, vegetables and raisins. Fruit, water and milk are provided free.

Please let staff know if your child has any food allergies or special dietary requirements.

Starting Nursery

The Nursery team will contact you a few weeks before your child is due to start. We will arrange a visit to our Nursery. The purpose of the visit is for you and your child familiarize yourself and your child with our Nursery. Staff will talk with you about what your child likes to do and discuss any questions or queries with you.

The first week of Nursery will be an induction week to help your child settle. It will consist of the following:

- | | |
|----------------------|--|
| First session: | Parent/Carer stay with their child for a short session to explore the nursery. |
| Second session: | A short session for your child. |
| Subsequent sessions: | Your child will attend full sessions once they are settled. |

A child that is tense or unhappy will not be able to play or learn properly, so it is important for parents and staff to work together to help the child to feel confident and secure in the group. This takes longer for some children than others and staff will work with you to ensure their start in Nursery is a positive one.

Please bring your child's birth certificate into the office so we can make a note of the details. It is a legal requirement for you to provide this and your child will not be able to start Nursery until this is complete.

Uniform

School uniform consists of a white shirt, black or grey trousers/skirt and a burgundy sweatshirt. Sensible black shoes, not trainers please. Girls may wear red gingham dresses in summer. Sweatshirts are available from the school office. Your child will also need a pair of named wellingtons for outdoor play.

Please mark all clothing with your child's name.

Jewellery

No jewellery is to be worn in Nursery however if your child has pierced ears small studs are permitted. Please provide small sticking plasters so they may be covered for PE.

Packed Lunch

Children who stay for the afternoon session will need to bring a packed lunch and drink. The school encourages healthy eating.

Book Bags

Your child will receive a free book bag upon entering Nursery. This needs to be brought in every day and will stay with them throughout their time at school. Library books will be brought home and changed weekly. A charge for lost or damaged books will be made.

Attendance

Fairstead Community Primary and Nursery School encourages regular attendance. If however your child is absent from school please contact the school office by 9.00am on the first day of your child's absence.

We hope that this pack includes everything you need to know about our Nursery but if you have any other questions or queries please contact us where we will endeavor to help.

Parental Support at Home

There are many websites that you and your child can use together to help support their development and learning whilst at home.

<http://www.bbc.co.uk/cbeebies> - stories, songs, rhymes and games for early years.

www.topmarks.co.uk – games and activities on a range of different topics.

<http://www.learnenglishkids.britishcouncil.org> – lots of games, songs and stories to support the English language.

<http://www.crickweb.co.uk/Early-Years> - fun educational games for 3 and 4 year olds.

Safeguarding Statement

This school is committed to keeping children safe. We have a duty of care to all children and will make the necessary enquiries and referrals if required to do so. Please see our Safeguarding and Prevent Policies for further information.

Policies can be accessed via our school website at www.fairstead.norfolk.sch.uk

