



## **Attendance Policy**

<b>Formally adopted by the Governing Board of:-</b>	<b>Fairstead Community Primary and Nursery School</b>
<b>On:-</b>	<b>30<sup>th</sup> Sept 2024</b>
<b>Date of next review:-</b>	<b>Sept 2025</b>

# Whole School Attendance Policy

## Fairstead Community Primary and Nursery School

### Policy Consultation & Review

This policy is available on our school website and is available on request from the school office. We also inform parents about this policy when their children join our school and regularly thereafter through our school newsletter and other relevant opportunities.

We recognise the expertise our staff build by managing school attendance daily and we therefore invite staff to contribute to and shape this policy and associated attendance and safeguarding arrangements.

This policy will be reviewed in full by the Governing Body/Board of Trustees on at least an annual basis. This policy was last reviewed and agreed by the Governing Body/Board of Trustees on **30/09/24**. It is due for review on **Sept 2025**.

Signature

Headteacher

Date:

Signature

Chair of Governors/Trustees Date:

# Contents

<b>Introduction</b>	4
<b>Promoting Regular Attendance</b>	5
<b>Roles and Responsibilities</b>	6
<b>Understanding types of absence</b>	9
<b>Persistent and Severe Absence</b>	10
<b>Term time Holidays and Leave of absence</b>	11
<b>Medical appointments and absence due to illness</b>	11
<b>Pupil absence for the purposes of Religious Observance</b>	12
<b>Gypsy, Roma and Traveller pupils</b>	12
<b>Our Procedures</b>	13
<b>Register Keeping and Recording</b>	13
<b>Expected absence procedure for parents</b>	14
<b>Late arrival at school</b>	15
<b>Support Systems</b>	15
<b>Attendance Rewards &amp; Interventions</b>	17
<b>Use of Data</b>	18
<b>Part time timetables</b>	18
<b>School Attendance and the Law</b>	18
<b>National Framework for penalty notices</b>	19
<b>Deletions from the Register</b>	19
<b>Attendance and Wellbeing</b>	20
<b>Related Policies</b>	21
<b>Statutory Framework</b>	21
<b>Appendices</b>	22
<b>Appendix 1: Norfolk County Council: Penalty Notices regarding school absence – Guidance for parents</b>	23
<b>Appendix 2: Example leave of absence request form</b>	25
<b>Appendix 3: Attendance Policy Quick Guide for Parents</b>	27
<b>Appendix 4: Exceptional Circumstances</b>	29
<b>Appendix 5: Roadmap to Attendance</b>	31
<b>Appendix 6: Supporting Children’s Mental Health and Emotional Wellbeing</b>	32

## 1. Introduction

At Fairstead Community Primary and Nursery School we recognise that positive behaviour and good school attendance are essential in order for pupils to get the most of their school experience, including their attainment, wellbeing and wider life chances. Missing out on lessons leaves children vulnerable to falling behind and can put them at risk of wider harm. There is a [wide range of evidence](#) as to the health and wellbeing benefits of school-age education.

The law entitles every child of compulsory school age to an efficient, full-time education suitable to their age, aptitude, and any special educational need they may have. It is the legal responsibility of every parent to make sure their child receives that education either by attendance at a school or by education otherwise than at a school. Where parents decide to have their child registered at school, they have an additional legal duty to ensure their child attends that school regularly and on time. This means their child must attend every day that the school is open, except in a small number of allowable circumstances such as being too ill to attend or being given permission for an absence in advance from the school.

The Department for Education (DfE) has produced statutory guidance for maintained schools, academies, independent schools, and local authorities. It is called "[Working together to improve school attendance](#)" and it includes a National Framework in relation to absence and the use of legal sanctions. Our School Attendance Policy reflects the requirements and principles of that guidance including the importance of understanding the potential vulnerabilities of children who are missing education or absent from school.

This policy is written with the above guidance in mind and underpins our school ethos to:

- Work with families to identify the reasons for poor attendance and try to resolve any difficulties at the earliest opportunity.
- Promote children's welfare and safeguarding.
- Ensure every pupil has access to the suitable, full-time education to which they are entitled.
- Ensure that pupils succeed whilst at school.
- Ensure that pupils have access to the widest possible range of opportunities at school, and when they leave school.

Our policy outlines the school's commitment to attendance. Our policy aims to provide clear guidance to all staff, parents & carers, pupils and governors/trustees about the responsibilities and the procedures in place to promote and monitor pupil attendance.

Our policy aims to raise and maintain levels of attendance by:

- Promoting a positive and welcoming atmosphere in which pupils feel safe, secure, and valued.
- Raising and maintaining a whole school awareness of the importance of good attendance and punctuality.
- Ensuring that attendance is monitored effectively and reasons for absences are recorded promptly and consistently.

For our pupils to gain the greatest benefit from their education it is vital that they attend regularly and on time, every day the school is open unless the reason for the absence is unavoidable.

We recognise that attendance is a matter for the whole school community. Our Attendance Policy should not be viewed in isolation; it is a strand that runs through all aspects of school improvement, supported by our policies on safeguarding, prevention of bullying, behaviour, and inclusive learning. This policy also considers the Human Rights Act 1998, the Equality Act 2010, UN Convention on the Rights of the Child, and other relevant legislation.

## **2.Promoting Regular Attendance**

At Fairstead Community Primary and Nursery School we believe in developing good patterns of attendance and set high expectations for the attendance and punctuality for all our pupils from the outset. It is a central part of our school's vision, values, ethos, and day to day life. We recognise the strong connections between attendance, attainment, safeguarding and wellbeing.

<b>Role</b>	<b>Name</b>	<b>Contact details</b>
<b>Senior Attendance Champion</b>	<b>Daniel Farthing</b>	<b>01553 774666</b>
<b>Attendance Officer</b>	<b>Joanne Uttin</b>	<b>01553 774666</b>
<b>School Secretary</b>	<b>Tracey Harris</b>	<b>01553 774666</b>
<b>Named Governor</b>	<b>Vicky Etheridge</b>	<b>01553 774666</b>

Improving school attendance is everyone's business, it is a shared responsibility by governors/trustees, all school staff, parents, pupils, and the wider school community. Helping to create a pattern of regular attendance is the responsibility of parents, pupils and all members of school staff.

To help us all to focus on this, we will:

- Build strong relationships and work jointly with families.
- Give parents/carers information about attendance in our newsletters.
- Promote the benefits of high attendance.

- Accurately complete admission and attendance registers and have effective day to day processes in place to follow-up absence as required by law.
- Celebrate excellent attendance by displaying and reporting individual and class achievements.
- Reward good or improving attendance.
- Report to parents/carers regularly on their child's attendance and the impact on their progress.
- Contact parents/carers should their child's attendance fall below the school's target for attendance.
- Submit a daily attendance return to the Department of Education, in line with the legal expectations placed on all schools.

## 2.1 Roles and Responsibilities

The Local Governing Board of Fairstead Community Primary and Nursery School recognises the importance of school attendance and promotes it across the school's ethos and policies. They take an active role in attendance improvement by:

- Setting high expectations of all leaders, staff, pupils, and parents so that children attend school every day and are safeguarded from harm.
- Identifying a member of the governing body to lead on attendance matters and ensuring that there is a named senior attendance champion.
- Ensuring school leaders fulfil expectations and statutory duties by rigorously evaluating the effectiveness of the school's attendance procedures so that consistent attendance support is provided for all pupils.
- Ensuring the school engages and works effectively with the local authority Attendance Team and wider local partners and services to address barriers to school attendance.
- Regularly reviewing attendance data, discussing, challenging trends, and helping school leaders focus improvement efforts on the individual pupils or cohorts who need it most.
- Ensuring high aspirations are maintained for all pupils and processes for support are adapted to the individual needs of pupils including those with long term illnesses, special educational needs and disabilities, pupils with a social worker or youth justice worker and pupils from cohorts with historically lower attendance such as those eligible for free school meals.
- Ensuring all school staff receive adequate training on attendance and that relevant staff have access to opportunities to share and learn from good practice in other schools.
- Ensuring that attendance data is shared with the Local Authority or Department for Education as required and on time.
- Reviewing the school's Attendance Policy on at least an annual basis, ensuring that the required resources are available to fully implement the policy.

The Senior Management Team (including senior attendance champion) at Fairstead Community Primary and Nursery School will:

- Actively promote the importance and value of good attendance to **all** pupils and their parents.

- Form positive relationships with pupils and parents.
- Ensure that there is a whole school approach which reinforces good school attendance, with good teaching and learning experiences that encourage all pupils to attend and to achieve.
- Monitor the implementation of the Attendance Policy and ensure that the policy is reviewed annually.
- Ensure that all staff are aware of the Attendance Policy and adequately trained to address attendance issues.
- Ensure that the regulations and other relevant legislation are complied with.
- Ensure that there is a named senior attendance champion to lead on attendance and allocate sufficient time and resource.
- Return school attendance data to the Local Authority and the Department for Education as required and on time.
- Report the school's attendance and related issues through termly reporting to the Governors/Trustees and on a half-termly basis to the lead governor/trustee for attendance.
- Ensure that systems to report, record and monitor the attendance of all pupils, including those who are educated off-site are implemented.
- Ensure that attendance data is collected and analysed frequently to identify causes and patterns of absence.
- Interpret the data to devise solutions and to evaluate the effectiveness of interventions.
- Develop a multi-agency response to improve attendance and support pupils and their families.
- Document interventions used to a standard required by the local authority should legal proceedings be instigated.
- Set out how Pupil Premium will be used to support pupils with irregular attendance.

All staff at Fairstead Community Primary and Nursery School will:

- Actively promote the importance and value of good attendance to **all** pupils and their parents.
- Form positive relationships with pupils and parents.
- Contribute to a whole school approach which reinforces good school attendance; with good teaching and learning experiences that encourage all pupils to attend and to achieve.
- Comply with the regulations and other relevant legislation.
- Implement systems to report, record and monitor the attendance of all pupils, including those who are educated off-site.
- Ensure that registers are recorded accurately and in a timely manner.
- Contribute to the evaluation of school strategies and interventions.
- Work with other agencies to improve attendance and support pupils and their families.

The member of staff responsible for attendance will work to further develop relationships with families to bring about improved attendance. This may involve seeking multi-agency support. The member of staff responsible for attendance will

support good attendance, respond to concerns, and promote improvement in attendance by:

- Monitoring and analysing pupil attendance data.
- Undertaking weekly attendance meetings with the Senior Attendance Champion, Designated Safeguarding Lead, SENCO, and other relevant staff members.
- Implementing the identified strategies for promoting excellent whole school attendance.
- Implementing the identified strategies for tackling unsatisfactory attendance.
- Managing individual pupil casework files.
- Coordinating individual action plans for pupils causing concern including the instigation of an Early Help Assessment and Plan and/ or the implementation of a attendance contract.
- Ensuring first day calling procedures are adhered to if a child is absent from school without contact from parents.
- Taking an active lead in delivering whole school initiatives such as awards assemblies and reward schemes.
- Making referrals to appropriate external agencies.

Fairstead Community Primary and Nursery School requests that parents:

- Ask the school for help if their child is experiencing difficulties with any aspect of their schoolwork or home and family life so that we can offer support at the earliest opportunity.
- Take a positive interest in their child's work and educational progress.
- Ensure their child has regular attendance at school.
- Instil the value of education and regular school attendance within the home environment.
- Contact the school if their child is absent to let them know the reason why and the expected date of return, following this with a note wherever possible.
- Avoid unnecessary absences; for example, by making medical and dental appointments for outside of school hours.
- Inform the school of any change in circumstances that may impact on their child's attendance.
- Support the school by becoming involved in their child's education, forming a positive relationship with school, and acknowledging the importance of children receiving the same messages from both school and home.
- Maintain effective routines at home to support good attendance.
- Attend all meetings requested to discuss attendance issues.

Pupils will:

- Be aware of the school’s attendance policy and when and where they are required to attend. This will be communicated to them by school staff, parents and through the school timetable.
- Speak to their class teacher or another member of staff if they are experiencing difficulties at school or at home which may impact on their attendance.
- Attend all lessons ready to learn, with the appropriate learning tools requested and on time for the class.
- Follow the school procedure if they arrive late. This will help the school to monitor attendance and keep accurate records for the child’s individual attendance. This is also vital for health and safety in the event of a school evacuation.

### 3. Understanding Types of Absence

Any absence affects the routine of a child’s schooling and regular absence will seriously affect their learning journey and ability to progress. Any pupil’s absence or late arrival also disrupts teaching routines and may affect the learning of other pupils. Ensuring a child’s regular attendance at school is a parental responsibility and allowing absence from school, without a good reason, creates an offence in law and may result in prosecution.

Every half-day absence from school has to be classified by the school (not by the parent), as either **authorised** or **unauthorised**. This is why information about the cause of any absence is always required. Each half-day is known as a ‘session’. Absence will not be authorised unless parents have provided a satisfactory explanation, and it is accepted as such by the school. The decision to authorise absences is at the discretion of the Headteacher.

For the purpose of this policy, the school defines:

“Absence” as:

- Arrival at school after the register has closed
- Not attending school for any reason

“Regular” attendance as:

- Attendance at every session the school is open to pupils unless their absence has been authorised

**Authorised absences** are morning or afternoon sessions away from school for a genuine reason such as:

- An absence for sickness for which the school has granted leave
- Medical or dental appointments which unavoidably fall during school time, for which the school has granted leave
- Religious or cultural observances for which the school has granted leave
- An absence due to a family emergency or unavoidable cause

**Unauthorised absences** are those which the school does not consider reasonable and for which no ‘leave’ has been granted such as:

- Parents keeping children off school unnecessarily or without reason e.g. because they had a late night or for non-infectious illness or injury that would not affect their ability to learn;
- Absences which have never been properly explained
- Arrival at school after the register has closed
- Shopping, looking after other children or birthdays
- Day trips and holidays taken during term-time, not deemed 'for exceptional purposes' by the headteacher, including any arranged by other family members or friends.
- Leaving school for no reason during the day.
- Any other absence in term time which has not been agreed.

This type of absence can lead to the school referring to the Local Authority for penalty notices and/or legal proceedings.

### 3.1 Persistent and Severe Absence

A pupil is defined by the Government as a '**persistent absentee**' (**PA**) when they miss 10% or more schooling across the school year for any reason; this can be authorised or unauthorised absence. Over a full academic year this would be 19 school days (38 sessions) missed. Absence at this level will cause considerable damage to any pupil's education and we need the full support and co-operation of parents to resolve this.

A pupil who has missed 50% or more schooling is defined by the Government as '**severely absent**' (**SA**). Pupils within this cohort may find it more difficult to be in school or face bigger barriers to their regular attendance and, as such, are likely to need more intensive support.

The attendance of all pupils at our school is monitored to identify children who are PA, or are on track to becoming PA. Where emerging concerns are identified we will instigate appropriate and timely interventions as outlined in our policy. Referrals may also be made to external agencies for targeted support.

If parents fail to engage with support and their child continues to have unsatisfactory attendance/ punctuality, a request may be made to the Local Authority to pursue legal proceedings either through a penalty notice for parentally condoned absence, consideration of an Education Supervision Order or prosecution in the Magistrates' Court.

Parents found guilty in a Magistrates' Court of failing to secure their child's regular attendance at school under the provisions of the Education Act 1996, will receive a criminal record and a maximum penalty of a £1000 fine under a Section 444 (1) offence or a £2500 fine or up to a 3-month prison sentence, under a Section 444 (1a) offence

### **3.2 Term Time Holidays and Leave of Absence**

We believe that children need to be in school for all sessions so that they can make the most progress possible. Leave will not be granted for the purposes of a family holiday, which will not be recorded as authorised. We recognise that it is more expensive to take a holiday during school breaks and that is why many parents request term-time Leave of Absence for their child and this will not be authorised. However, we do understand that there are times where a parent may legitimately request leave of absence for a child due to 'exceptional circumstances'. At Fairstead Community Primary and Nursery School leave of absence is only granted at the discretion of the Headteacher and shall not be granted unless there are 'exceptional circumstances'. Fairstead Community Primary and Nursery School will respond to all applications for leave of absence in writing.

Parents wishing to apply for leave of absence during term time must apply in writing to the Headteacher at least a month before the planned leave (see Appendix 2). Fairstead Community Primary and Nursery School will treat each application individually and discuss with you the circumstances of the application before a decision is made. If a written request for leave of absence is not completed and the leave is taken without a request being submitted, it will be marked as unauthorised. Retrospective requests will not be considered and will also result in the absence being categorised as unauthorised. In such cases the school may make a referral to the Local Authority to request that a penalty notice fine is issued or consider prosecution.

When absence is granted by the Headteacher, the parents will need to agree a date of return. If a pupil fails to return on the expected date and contact is not received from, or made with the parents, school will seek advice from the Local Authority. This could result in possible children missing from education procedures being instigated.

Home visits may be carried out if we suspect a holiday has been taken during term time.

### **3.3 Medical Appointments and absence due to illness**

Parents should try to make appointments outside of school hours wherever possible. Where appointments during school time are unavoidable, we ask that parent notifies the school in advance of the appointment wherever possible. The pupil should only be out of school for the minimum amount of time necessary for the appointment. In most circumstances, a child should not miss a whole day at school for an appointment. If a pupil must attend a medical appointment during the school day, they must ensure that they have signed their child out on Inentry. Inentry is our electric system, in the

office foyer, used for signing students in and out. No pupil will be allowed to leave the school site without parental confirmation.

In most cases, absences for illness which are reported following the school's absence reporting procedures will be authorised without the need for parents to supply medical evidence. In line with Department for Education guidance, if we do have a genuine concern about the authenticity of the illness, we will speak to parents/carers regarding our concerns and look at what support can be put in place to ensure their child's regular attendance at school. If the school is not satisfied about the authenticity of the illness, the absence will be recorded as unauthorised.

Where a child has an emerging pattern of non-attendance, we will discuss the reasons for absence with the child's parent/carer. We will invite parents to attend a school-led Attendance Support Panel as an appropriate early intervention strategy. As part of this support, we may seek consent from parents and the pupil as appropriate to make a referral to the 5-19 Healthy Child Programme team and/or to liaise with the child's healthcare professional.<sup>1</sup>

Where a pupil has a verified and chronic health condition, we will aim to work with parents to ensure children have access to education and provide appropriate support in line with [Supporting pupils with medical conditions at school](#) and Norfolk County Council policies via the [Medical Needs Service](#). We will also consider whether an Individual Healthcare Plan is required.

### **3.4 Pupil Absence for the purposes of Religious Observance**

Fairstead Community Primary and Nursery School acknowledges the multi-faith nature of British society and recognises that, on some occasions, religious festivals may fall outside school holiday periods or weekends and is recognised as such by a relevant religious authority. Where this occurs, the school will consider either authorising the pupil absence or making special leave for religious observance. Parents are requested to give advance notice to the school.

### **3.5 Gypsy, Roma and Traveller pupils**

Gypsy, Roma and Traveller (GRT) pupils are among the lowest achieving groups of pupils at every key stage in education, although some GRT pupils achieve very well at school. We recognise that there are many complex and interwoven factors that may influence the educational attainment of GRT pupils. At our school, we have high expectations of all pupils, regardless of their background whilst recognising the lifestyle and cultural traditions of GRT communities. In line with The Education Act

---

<sup>1</sup> This is in accordance with the NSCP [Joint Protocol between Health Services & Schools in respect of the management of pupil absence from school when medical reasons are cited](#)

1996, Section 444(6) the school will authorise the absence of a pupil who is a mobile child<sup>2</sup> and is unable to attend school because:

- the parent is engaged in a trade or business of such a nature as to require him to travel from place to place,
- that the child has attended at a school as a registered pupil as regularly as the nature of that trade or business permits, and
- if the child has attained the age of six, that he has made at least 200 attendances during the period of 12 months ending with the date on which the proceedings were instituted

This provision applies *only* when the family has no fixed abode and are engaged in a trade or business that requires them to travel and when the child is attending school as regularly as that trade permits. In these circumstances, parents have a duty to ensure that their children are receiving suitable education when not at school.

When a family is trading or otherwise conducting their business in or around Norfolk, if a family can reasonably travel back to their base school (see below) then the expectation is that their child will attend full-time. Fairstead Community Primary and Nursery School will be regarded as the base school if it is the school where the child normally attends when he or she is not travelling. However, the pupil must have attended Fairstead Community Primary and Nursery School in the last 18 months. Parents can register their children at other schools temporarily while away from their base school; in such cases, the pupil's school place at Fairstead Community Primary and Nursery School will be kept open for them whilst travelling. This is to protect them from unfairly losing their place at their school of usual attendance.

To ensure we can effectively support all our pupils, we ask that parents:

- Advise the school of their forthcoming travelling patterns as soon as these are known and before they happen; and
- Inform the school regarding proposed return dates.

## **4. Our Procedures**

In this section, the school will outline the procedures in place for taking registers and clearly specify the times and methods for register keeping and recording.

### **4.1 Register Keeping and Recording**

The School Attendance (Pupil Registration) (England) Regulations 2024, require schools to take an attendance register twice a day, once at the start of the morning session (8:45am) and then again during the afternoon session (1pm). The register must record whether the pupil was:

- Present;

---

<sup>2</sup> A mobile child is a child of compulsory school age who has no fixed abode and whose parent(s) is engaged in a trade or business of such a nature as to require them to travel from place to place.

- Absent;
- Present at approved educational activity; or
- Unable to attend due to exceptional circumstances.

## 4.2 Expected absence procedure for parents:

A parent has a legal responsibility to ensure that their child attends school regularly. If a child is unavoidably absent from school parents are expected to contact school by telephone call/Parentmail on the morning of the first day of absence and on each subsequent day, identifying the reason for absence and the expected date of return. If no contact is received, then absence protocols will be instigated.

### If a child is absent from school the parent must follow these procedures:

- Contact the school on the first day of absence before 9:15am when our register closes.
- To report absences parents/carers are expected to ring the school office on 01553 774666 to speak to a member of staff, ring the school office and leave a voicemail or leave a reason for absence via Parentmail.
- Contact the school on every further day of absence, again before 9:15am.
- Ensure that your child returns to school as soon as possible.

Senior Attendance Champion – the senior leader responsible for the strategic approach to attendance in our school	Daniel Farthing	01553 774666
School secretary – the member of staff who parents should contact about attendance on a day-to-day basis	Tracey Harris	01553 774666
Attendance Officer – the member of staff who parents should contact for more detailed support on attendance	Joanne Uttin	01553 774666

### If your child is absent, the following actions will be initiated by the school:

- The first day calling procedures will be activated for all pupils who are not in school after close of register at **9:15am** and where no reason for absence is known. We will telephone or text you on the first, and every subsequent day of

absence, if we have not heard from you. However, it is your responsibility to contact us;

- If we are unable to make contact with parents by telephone, we will telephone emergency contact numbers and a home visit may be made, in the interests of safeguarding.
- For several days of reported absence, home visits may be carried out.
- We will also inform a pupil's social worker and/or youth offending team worker if there are unexplained absences from school in line with statutory requirements. We will also inform a pupil's social worker and/or youth offending team worker if their name is to be deleted from the school register.

### 4.3 Late Arrival at School

Poor punctuality is not acceptable and can lead to irregular school attendance patterns. Pupils who arrive late disrupt lessons and, if a child misses the start of the day, they can feel unsettled and embarrassed and risk missing vital work and important messages from their class teacher.

At Fairstead Community Primary and Nursery School all pupils are expected to arrive on time for every day of the school year. The main school gates will be open from **8:40am** and all children are expected to be lined up in their class line ready for the start of the day. The school day begins at **8:45am**. We advise all parents to ensure their child is on site prior to this. The school register will be taken at **8:45am**. All pupils arriving after this time are required to report to the main office with their parents, who will be expected to provide a reason for their absence. If their arrival is before **9:15am** it will be recorded as late - L code (Late before the close of register).

The school register will officially close **9:15am**. All pupils arriving on or after this time will be marked as having an unauthorised absence for the morning session - U code (Late after the close of register). This is categorised as an unauthorised absence for the session. Unauthorised lateness could result in the school referring to the Local Authority for sanctions and/or legal proceedings. If your child has a persistent lateness record, you may be asked to meet with the Attendance Officer, but you can approach us at any time if you are having difficulties getting your child to school on time. We expect parents and staff to encourage good punctuality by being good role models to our pupils and, as a school, we celebrate good class and individual punctuality.

Please note: L or U codes will be used if a pupil arrives after the close of the afternoon register for the PM session.

## 4.4 Support Systems

At Fairstead Community Primary and Nursery School we recognise that poor attendance can be an indication of difficulties in a family's life. This may be related to problems at home and or in school. Parents are encouraged to inform school of any difficulties or changes in circumstances that may affect their child's attendance and or behaviour in school, for example, bereavement, divorce/separation, emerging health concerns. This will help the school identify any additional support that may be required.

We also recognise that some pupils are more likely to require additional support to attain good attendance. The school will implement a range of strategies to support improved attendance based on the individual needs and circumstances of the child.

Strategies we may use to support you include:

- Write to you if your child's attendance is causing a concern and/or where punctuality is a concern.
- Arrange a meeting so that you may discuss the situation with our Attendance Officer.
- Create a personalised action/support plan, such as an attendance contract, to address any barriers to attendance and make clear each person's role in improving the attendance patterns of your child.
- Offer signposting support to other agencies or services, if appropriate or undertake an Early Help Assessment & Plan with you.
- Offer breakfast club, sticker charts, check ins, home visits and after school clubs for your child.
- Refer the matter to an external agency for multi-agency support or consult with the Children's Advice and Duty Service (CADS) or the police, where there are safeguarding concerns.
- Refer to the Local Authority for joint enquiries to be made to establish the whereabouts of the child through Children Missing Education procedures if no contact has been made with parents by the 10<sup>th</sup> day of absence (or sooner if deemed appropriate).
- Refer the matter to the Local Authority for relevant legal sanctions, if attendance deteriorates following the above actions.
- Additional supportive measures can be implemented on case-by-case circumstances.

To plan the correct support, we will always invite parents and pupils to attend a meeting to discuss the concerns and devise a plan to support the child's regular attendance. Support offered to families will be child-centred and planned in discussion and agreement with both parents and pupils.

## 4.5 Attendance Rewards & Interventions

At Fairstead Community Primary and Nursery School our whole school attendance target is 96%. In order to achieve this we have several rewards and interventions.

### Weekly

- **Each Friday the Attendance Officer will award the class with the best attendance for that week with an attendance trophy. That class may choose to reward the class with extra playtime or something similar.**

### Half termly

- **At the end of each half term, one child with 100% attendance for that half term from EYFS and KS1 and one child with 100% attendance for that half term from KS2 will be randomly selected and rewarded with a voucher for a local supermarket.**
- **The class with the best overall attendance for that half term will be rewarded with a treat on the last day of that half term. For example, movie and popcorn afternoon, pizza making workshop or biscuit decorating.**

### Termly

- **Every child that has an attendance figure of 96% and over for the term (allowing for authorised absences due to religious observance) will receive an attendance certificate.**

Attendance concerns will be addressed with parents at the earliest opportunity. At Fairstead Community Primary School we engage in a 'Support First Approach' to attendance. If a child's attendance becomes a concern parents/carer will be invited to attend a meeting with the Attendance Officer to discuss the concerns, to address any barriers that are prohibiting the child from attending school and to discuss what support the school can offer. A plan will then be produced and actions will be agreed. An attendance contract may be explored. A date for a review meeting will be agreed with parents/carers.

If attendance continues to decline, and there are 10 sessions of unauthorised absence in a rolling period of 10 school weeks, then a Notice to Improve may be used to offer parents/carers a final opportunity to engage with support and improve the attendance levels of the child concerned.

Where a parent/carer fails to engage with the offer of support during the Notice to Improve validity period and/or further unauthorised absences are recorded for the pupil and/or there are not significant improvements in the child's attendance patterns, a referral for legal intervention can be submitted. All Notices to Improve issued will have a validity period of 6 school weeks (a maximum of 30 school days)

At Fairstead Community Primary and Nursery School we will investigate and offer support to any pupils who are on track to be persistently absent (PA) and will not wait until attendance is below 90%.

## **4.6 Use of Data**

All staff are responsible for children's attendance. Attendance is shared with parents in the form of phone calls, letters, meetings, parents evening, school reports and rewards. Attendance is shared with children in the form of certificates, stickers, treat afternoons and vouchers. Staff are aware of attendance via daily use of Scholarpack where the dashboard highlights who is absent on that day. A report is also completed and analysed by vulnerable groups every half term.

## **4.7 Part-time timetables**

All schools have a statutory duty to provide full-time education for all pupils and we are committed to every child's right to a suitable, full-time education offer. In very exceptional circumstances, we may decide to implement a temporary, reduced timetable where a pupil's individual needs indicate they cannot currently access a full-time education and it would not be in their best interest to do so. We will not use a part-time timetable to manage a pupil's behaviour. A part-time timetable will not be treated as a long-term solution and will have a time limit by which point the pupil is expected to attend full-time or be provided with alternative provision. We will never put a part-time timetable in place without written agreement from parent/carer and/or other professionals working with the family as appropriate. This intervention will only be used as part of a comprehensive package of support for the pupil where it is safe to do so; it will be reviewed regularly in partnership with the child, parent and any other relevant professionals working with the family.

In line with Norfolk County Council [guidance](#), we will notify the Attendance Team of all part-time timetables as soon as a plan has been agreed.

## **5. School Attendance and the Law**

The School Attendance (Pupil Registration) (England) Regulations 2024 introduced a National Framework in England. By law all children of compulsory school age must receive an appropriate full-time education (Education Act 1996). Parents have a legal duty to ensure their child attends school regularly at the school at which they are registered.

Parents may be recognised differently under education law, than under family law. Section 576 of the Education Act 1996 states that a 'parent', in relation to a child or young person, includes any person who is not a parent (from which can be inferred 'biological parent') but who has parental responsibility, or who has care of the child.

A person typically has care of a child or young person if they are the person with whom the child lives, either full or part time and who looks after the child, irrespective of what their biological or legal relationship is with the child.

## 5.1 National Framework for Penalty Notices

There is now a single consistent national threshold for when a penalty notice must be considered by all schools in England, of 10 sessions (usually equivalent to 5 school days) of unauthorised absence within a rolling 10 school week period. The 10 sessions of absence do not have to be consecutive and can be made up of a combination of any type of unauthorised absence (G, O and/or U coded within the school's registers). The 10-school week period can span different terms, school years or education settings.

Sanctions may include issuing each parent (for each child) with a Penalty Notice for £160, reduced to £80 if paid within 21 days (for the first offence). A second Penalty Notice issued within a three-year period will result in a fine of £160 per parent, per child. If a third offence is committed the matter may be referred to the local authority for consideration of prosecution via the Magistrates Court. If prosecution is instigated for irregular school attendance, each parent may receive a fine of up to £2500 and/or up to 3 months in prison. If a parent is found guilty in court, they will receive a criminal conviction.

For further information see the Norfolk Code of Conduct for issuing fixed penalties regarding school attendance.

**There is no entitlement in law for pupils to take time off during the term to go on holiday or other absence for the purpose of leisure or recreation, or to take part in protest activity in school hours.** In addition, the Supreme Court has ruled that the definition of regular school attendance is "in accordance with the rules prescribed by the school."

We will work with parents and the Local Authority to ensure that parents are supported to secure education for children of compulsory school age. Where required, we will formalise support and where necessary, work with the LA to use legal measures.

## 6. Deletions from the Register

At Fairstead Community Primary and Nursery School we will add and will only delete pupils from our school roll in line with the Pupil Registration Regulations. In most circumstances, we will know in advance about pupils leaving our school; this will be

planned and discussed with the parent in advance of the pupil leaving. At Fairstead Community Primary and Nursery School we will always work with families to gain information about the pupil's next school and/or address before the pupil leaves to reduce the risk of pupils becoming a child missing education through lack of shared information.

We follow Norfolk County Council's Child Missing Education procedures and will inform the Children Missing Education Team of all removals from our school roll no later than the date the child is removed in line with statutory responsibilities.

If a child is removed from roll to home educate, we can only de-register the child if we receive, in writing, the parent's intention to educate their child other than at school. The pupil will be de-registered on receipt of such a letter and Norfolk County Council will be informed of the removal from roll as outlined above.

Fairstead Community Primary and Nursery School will follow Norfolk County Council's [Children Missing Education procedures](#) when a pupil's whereabouts is unknown, the school will carry out joint enquiries with Norfolk County Council to establish the whereabouts of the child.

## **7. Attendance and Mental Wellbeing**

Some children may find it harder to attend school than others, and can face several barriers. This can include children who have long-term mental health difficulties or who have special educational needs and disabilities (SEND). Absence or reduced attendance can sometimes be rooted in emotional, mental health or wellbeing issues. Although absence can be a complex issue, our staff support our children by focusing on the specific needs of individuals as part of a whole-school approach to mental health and wellbeing. Our staff work together in partnership with children, their families and other agencies to provide support. We are committed to supporting the mental health and wellbeing of children.

We believe that a strong emphasis on pastoral care is key to supporting the mental health needs of our children and have sought to develop a caring ethos based on the values of kindness and respect. We understand that creating an environment in which children feel safe is central to their mental health and wellbeing.

We understand that at times, the challenges of everyday life can mean anyone can experience feelings of anxiety, stress and vulnerability and that they may need help and support to overcome such feelings. We take the view that mental health and wellbeing is everyone's responsibility and we all have a role to play in meeting the emotional and mental health needs of all our children. If you are concerned your child's attendance is being affected by their mental health please contact our Mental Health Lead, Mrs Redden. Our mental health and wellbeing support can be found in appendix 6.

## 8. Related Policies

To underpin the values and ethos of our school and our intent to ensure that pupils at our school attend school regularly and reach their full potential the following policies are integral to this approach:

- safeguarding including child protection
- medical needs
- admissions
- anti-bullying
- exclusion
- special educational needs information report
- teaching and learning
- behaviour and relationships
- home visit

## 9. Statutory Framework

This policy has been devised in accordance with the following legislation and guidance:

- [Working together to improve school attendance, DfE \(August 2024\)](#)
- [The School Attendance \(Pupil Registration\) \(England\) Regulations 2024](#)
- [School attendance parental responsibility measures, DfE \(January 2015\)](#)
- [Children missing education, DfE \(September 2016\)](#)
- [Keeping children safe in education, DfE \(September 2023\)](#)
- [Working together to safeguard children, DfE \(December 2023\)](#)

## **10. Appendices**

The following pages contain appendices relevant to this policy.

## Appendix 1: Norfolk County Council: Penalty Notices regarding school absence – Guidance for parents

### Regular school attendance and parent's legal responsibilities

At Fairstead Community Primary and Nursery School our aim is to collaborate with parents to ensure that all our pupils receive the most from their education and reach their full potential.

This guidance is to remind all parents about the law that requires them to ensure that their child attends school regularly. The Government is clear that no child should miss school apart from in exceptional circumstances and schools must take steps to reduce absence to support children's attainment.

### The important legal information – New from August 19<sup>th</sup>, 2024

The Government have introduced a single national threshold for when a penalty notice must be considered by all schools in England. This threshold is **10 sessions (usually equivalent to 5 school days) of unauthorised absence within a rolling 10 school week period**. These sessions do not have to be consecutive and can be made up of a combination of any type of unauthorised absence. The period of 10 school weeks can span different terms or school years.

In line with national guidance, the Local Authority (LA) retains the discretion to issue a penalty notice before the threshold is met. This might apply for example, where parents have taken several term time holidays below the national threshold. The LA also retains the discretion to consider going straight to prosecution where appropriate.

A maximum of 2 penalty notices per parent, per child can be issued within a rolling 3-year period. This period will start from the issue of the 1<sup>st</sup> penalty notice. The national framework also sets out the escalation process which applies to such penalty notices. If the national threshold is met for a third time (or subsequent times) within 3 years, another tool should be used. In Norfolk, where a pupil's attendance has met the national threshold for a third time within 3 years and the parent/s have already been issued with 2 penalty notices within that period, consideration will be given to prosecution under section 444 of the Education Act 1996, which can result in a criminal conviction and fine of up to £2,500.

A parent includes any person who is not a natural parent but who has parental responsibility for the child or who has care of the child, as set out in section 576 of the Education Act 1996. Penalty notices will usually be issued to the parent/s with day-to-day responsibility for the child's attendance or the parent/s who have allowed the absence (regardless of which parent has applied for a leave of absence).

The first penalty notice issued to a parent for a child will be charged at £160 to be paid within 28 days. This will be reduced to £80 if paid within 21 days. Where it is deemed appropriate to issue a second penalty notice, the second penalty notice to the same parent for the same child within 3 years of the first offence, is charged at a flat rate of £160 and is payable within 28 days. **There is no reduced sum available in this instance.**

Part payments or payment plans are not acceptable, and fines must be paid in full within 21 or 28 days, at the rate specified within the penalty notice. There is no right of appeal against a penalty notice.

### **Requests for leave of absence**

[Working together to improve school attendance](#) advises all schools that they should only grant a leave of absence during term time in exceptional circumstances, considering each request on a case-by-case basis. If a leave of absence is granted, it is for the headteacher to determine the length of time the pupil can be away from school. Although we recognise the value and benefits of family holidays, it is unlikely a leave of absence will be granted for a family holiday as the Government 'does not consider a need or desire for a holiday or other absence for the purpose of leisure and recreation to be an exceptional circumstance.'

Requests for leave must be made in advance, otherwise schools will be unable to consider your individual circumstances and the absence will be recorded as unauthorised. Headteachers are not obligated to reconsider authorising leave if an application was not made in advance.

### **Support with ensuring regular school attendance**

If you require any support with ensuring your child's attendance, please contact Mr Farthing.

## Appendix 2: Example leave of absence request form.

APPLICATION FOR LEAVE OF ABSENCE FROM SCHOOL DURING TERM TIME			
<p><b>Important information for parents – please read before completing this form</b>  <a href="#">Working together to improve school attendance</a> advises all schools that they should only grant a leave of absence during term time in exceptional circumstances, considering each request on a case-by-case basis. If a leave of absence is granted, it is for the headteacher to determine the length of time the pupil can be away from school. Although we recognise the value and benefits of family holidays, it is unlikely a leave of absence will be granted for a family holiday as the Government ‘does not consider a need or desire for a holiday or other absence for the purpose of leisure and recreation to be an exceptional circumstance’.</p> <p>Requests for leave must be made in advance, otherwise we will be unable to consider your individual circumstances and the absence will be recorded as unauthorised. Headteachers are not obligated to reconsider authorising leave if an application was not made in advance.</p> <p>Our aim is for every pupil’s attendance to be 100% unless there are exceptional or unavoidable reasons for absence. If you require any support with ensuring your child’s attendance, please contact [Insert name and contact details].</p>			
I have read the above information and wish to apply for leave of absence from school for:			
<b>Child’s Full Name:</b>	<b>Date of Birth:</b>	<b>Class:</b>	
<b>Parent/Carer Details (please list all parents)</b>			
<b>First Name:</b>		<b>Surname:</b>	
<b>Date of Birth:</b>		<b>Relationship to the child:</b>	
<b>Address and postcode:</b>			
<b>Telephone number:</b>			
<b>First Name:</b>		<b>Surname:</b>	
<b>Date of Birth:</b>		<b>Relationship to the child:</b>	
<b>Address and postcode:</b>			
<b>Telephone number:</b>			
<b>Siblings: Please provide the name of any siblings and the school that they attend</b>			
<b>Child’s Full Name:</b>	<b>Date of Birth:</b>	<b>School:</b>	
<b>Details of the absence</b>			
<b>Date of First day of absence:</b>		<b>Date of last day of absence:</b>	
<b>Total Number of days absent:</b>		<b>Expected date of return to school:</b>	

**Please provide the reason for this request including supporting evidence:**

--

**Please read the following statement and sign to indicate you understand the this:**

I would like to request the above absence. I understand that the school strongly advises against taking unnecessary absence during term time and accept that this may have a detrimental impact on my child/ren's progress. I understand that a penalty notice may be issued if this request is denied, and my child is absent during this period. I understand that a fine will be payable per parent, per child.

I have read and understood Norfolk County Council's information regarding penalty notices for absence from school and the action they may take.

<b>Signed:</b>		<b>Full name:</b>		<b>Date:</b>	
<b>Signed:</b>		<b>Full name:</b>		<b>Date:</b>	

**To be completed by the school:**

<b>Date request received by the school:</b>		<b>Total number of days requested:</b>	
<b>Child's Name:</b>	<b>Application Authorised or Declined?</b>		
<b>Reason for school's decision:</b>			
<b>In the case of a term time holiday please confirm which parent took the holiday:</b>			
<b>Headteacher:</b>			
<b>Signed:</b>		<b>Date:</b>	

## Appendix 3: Attendance Policy Quick Guide for Parents

### Attendance Policy Quick Guide for Parents

The name and contact details of the school staff member pupils and parents should contact about attendance on a day-to-day basis is:

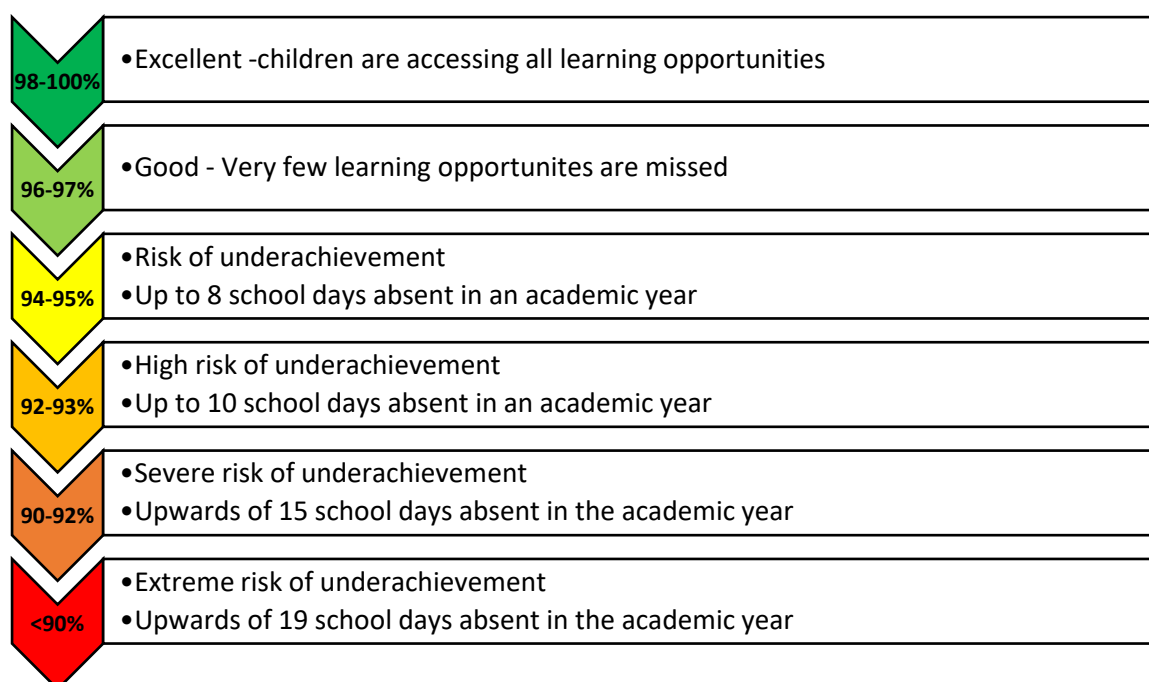
Name: School office

Telephone number: 01553 774666

**We expect pupils to attend school for 100% of the academic year. You can support your child to have excellent attendance by taking these steps:**

- Ensure your child arrives on time for school every day and is ready to learn. Arriving after registration is recorded as an unauthorised absence. Pupils must be in school by **8:45am**.
- Avoid taking holidays during term time.
- If your child appears to be only slightly ill, send them in to school. We have staff who will contact you if their condition deteriorates.
- Book any medical appointments outside of school hours. If this is unavoidable, please book for as late in the afternoon as possible and inform the school of appointments in advance.
- Supply a copy of the appointment card or hospital letter if your child has an appointment during school hours.

If your child becomes reluctant to go to school or you need help, please contact the school immediately; we are more likely to be able to work together to solve any problems if we act early.



## **‘On the day’ absences: what should I do if my child is not ‘fit’ to go into school?**

On each day your child is unfit to come to school, please report this absence via Parent Mail or call the school office on 01553 774666 before 9:15am to let us know. In the message you must leave your child’s full name, year and class and give the specific reason for absence. The information you give will be recorded on our official register.

### **Leave of Absence**

There may be exceptional circumstances where you need to request a leave of absence for your child. Please use our ‘Leave of absence request’ form to make these types of requests. The form should be submitted in advance of the leave of absence. You will receive a letter in response, to advise if the request has been granted or declined.

### **Punctuality**

Pupils are expected to arrive on time for school in the morning and for every lesson during the day. Your child must be lined up on the playground by **8:45am**.

The Government remains very clear that no child should miss school apart from in exceptional circumstances and schools must continue to take steps to reduce absence to support children’s attainment. I hope we can count on your support in this matter.

Please contact **Mrs Uttin** if you require any support with ensuring your child’s regular school attendance.

Senior Attendance Champion	Daniel Farthing	01553 774666
School Secretary	Tracey Harris	01553 774666
Attendance Officer	Joanne Uttin	01553 774666

## Appendix 4: Exceptional Circumstances

### Exceptional Circumstances

All schools are able to grant a leave of absence at their discretion. A leave of absence should not, and from a school maintained by a local authority or a special school not maintained by a local authority, must not be granted unless there are exceptional circumstances.

This information seeks to help clarify the meaning of 'exceptional circumstances' and outline some guiding principles to aid the head teacher's decision-making process while giving parents a consistent and fair approach to requests for any term-time absence.

Generally, the DfE does not consider a need or desire for a holiday or other absence for the purpose of leisure and recreation to be an exceptional circumstance. Leave of absence will not be granted for a pupil to take part in a protest activity during school hours.

### Guiding principles

1. Term times are for education. This is the priority. Children and families have 175 days off school to spend time together, including weekends and school holidays. The head teacher will rightly prioritise attendance. The default school policy is that absences will not be granted during term time and will only be authorised in exceptional circumstances.
2. The decision to authorise a pupil's absence is at the head teacher's discretion based on their assessment and merits of each request.
3. If an event can be reasonably scheduled outside of term time then it would not be exceptional circumstances, for example:
  - a. holidays or other travel, including as a result of parental work commitments, are therefore not considered 'exceptional circumstances';
  - b. leave which is taken because of the availability of cheaper fares or other costs are not regarded as exceptional circumstances;
  - c. absences to attend parents' own wedding may be exceptional if the head teacher is satisfied that there is a persuasive reason for holding the wedding during term time and there will be an onus on parents to show clear evidence that this absence is absolutely an exceptional circumstance. In difficult family situations the head teacher may use his discretion in granting leave and each case should be addressed on its individual merits, taking into account the overall welfare of the child.
4. Events that cannot be reasonably rescheduled out of term time may be considered as an exceptional circumstance, for instance:
  - a. claims of illness as a reason for a delayed return, particularly after normal school holidays will not be considered unless accompanied by travel tickets dated before the school opens or other agreed dates. Medical documentation from abroad will not normally be accepted unless accompanied by travel documents indicating travel dates prior to school reopening.
  - b. Absences to visit seriously-ill relatives or for a bereavement of a close family member are usually considered to amount to 'exceptional circumstances', but for the funeral service and travelling time only, not for extended leave. Absence will only be authorised if the head teacher is satisfied that the circumstances are truly exceptional.

- c. Absences for important religious observances are often taken into account, but only for the ceremony and travelling time, again, not for extended leave. This is intended for one-off situations rather than regular or recurring events.
  - d. The needs of the families of service personnel will be taken into account if they are returning from long operational tours that prevent contact during scheduled holiday time.
  - e. Where evidence can be provided that an absence from school is recommended by a health professional as part of a parent or child's rehabilitation from a medical or emotional issue.
  - f. families may need time together to recover from a trauma or crisis, including where an absence from school is recommended by a health professional as part of a parent or child's rehabilitation from a medical or emotional issue.
5. When making absence-related decisions, the head teacher will consider:
- a. a pupil's record of attendance for the current and previous academic years;
  - b. time of absence being taken in the school year. If the request is made to extend the beginning or end of a school holiday period, it is unlikely to be considered exceptional.
6. The head teacher can determine the length of the authorised absence as well as whether a particular absence is authorised.

The following factors may also help the head teacher to reach a decision:

- number of school days being missed;
- any exceptional term-time leave requested and/or taken in previous academic years for a similar purpose;
- whether alternative care arrangements have been considered by the parent to limit the time away from school;
- impact on any interventions, assessments or referrals being undertaken with the child or family, for example, family support, social care assessments, SEN;
- the potential impact that the absence will have on the child;
- whether the absence falls within any key stage national tests or exams.

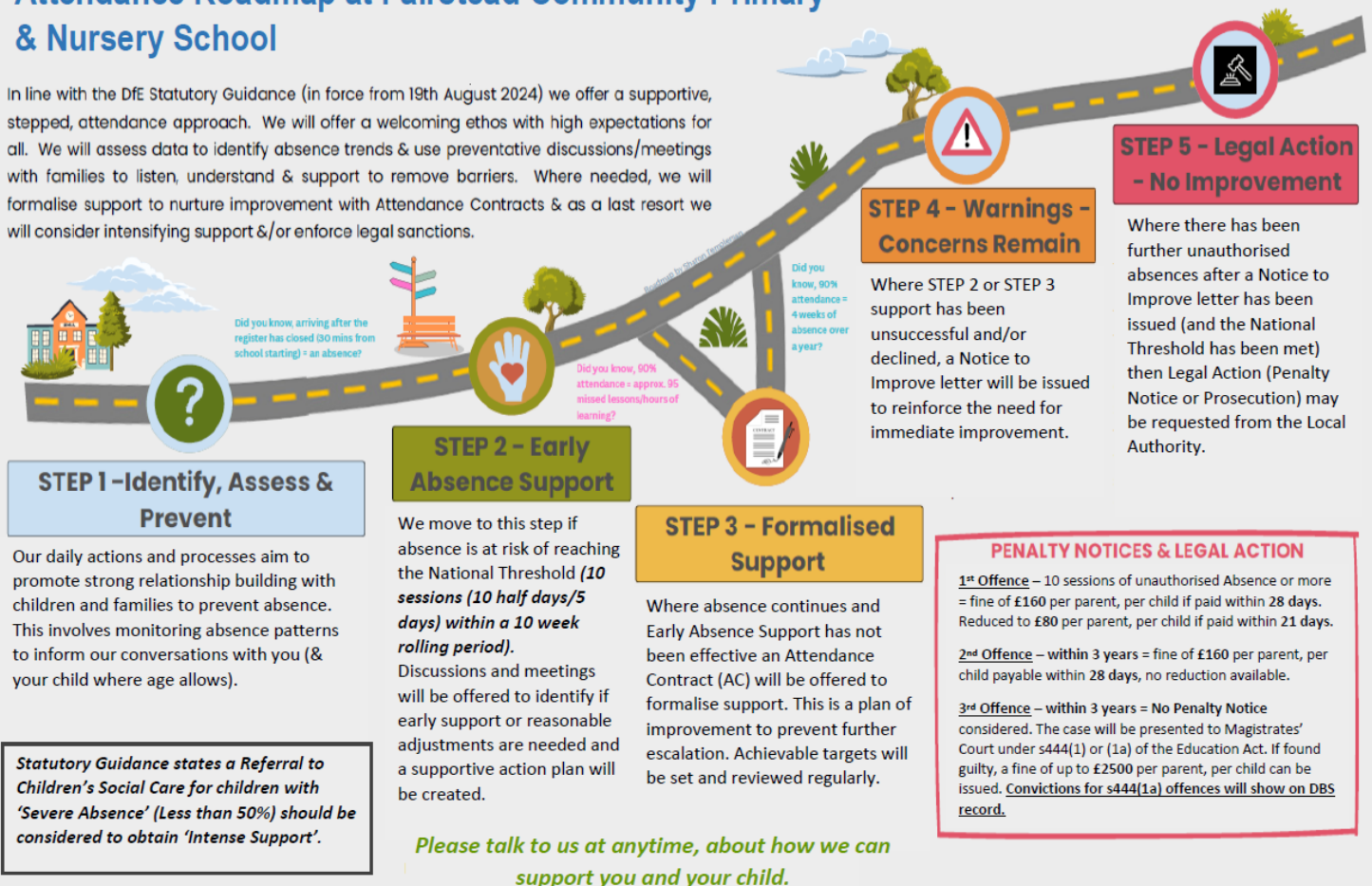
#### **How to tell us about exceptional circumstances:**

- A parent should complete an application form for term-time leave in good time. The parent with whom the pupil normally resides must make the application.
- Leave may only be granted where proper procedures have been followed and the permission given.
- Tickets and/or other travel arrangements should not be booked prior to discussion with and agreement of the school.
- Parents should not confuse telling the school with having permission.
- Where the school and the parents fail to reach an agreement and the child is then absent from school the absence will be marked as unauthorised. Unauthorised absences are an offence and can be liable to legal action or a fixed penalty fine.
- In the event of an emergency when you have to take leave urgently, taking children, then you should inform the school or have the school informed immediately.

## Appendix 5: Roadmap to Attendance

### Attendance Roadmap at Fairstead Community Primary & Nursery School

In line with the DfE Statutory Guidance (in force from 19th August 2024) we offer a supportive, stepped, attendance approach. We will offer a welcoming ethos with high expectations for all. We will assess data to identify absence trends & use preventative discussions/meetings with families to listen, understand & support to remove barriers. Where needed, we will formalise support to nurture improvement with Attendance Contracts & as a last resort we will consider intensifying support &/or enforce legal sanctions.



#### STEP 1 - Identify, Assess & Prevent

Our daily actions and processes aim to promote strong relationship building with children and families to prevent absence. This involves monitoring absence patterns to inform our conversations with you (& your child where age allows).

*Statutory Guidance states a Referral to Children's Social Care for children with 'Severe Absence' (Less than 50%) should be considered to obtain 'Intense Support'.*

#### STEP 2 - Early Absence Support

We move to this step if absence is at risk of reaching the National Threshold (**10 sessions (10 half days/5 days) within a 10 week rolling period**). Discussions and meetings will be offered to identify if early support or reasonable adjustments are needed and a supportive action plan will be created.

*Please talk to us at anytime, about how we can support you and your child.*

#### STEP 3 - Formalised Support

Where absence continues and Early Absence Support has not been effective an Attendance Contract (AC) will be offered to formalise support. This is a plan of improvement to prevent further escalation. Achievable targets will be set and reviewed regularly.

#### STEP 4 - Warnings - Concerns Remain

Where STEP 2 or STEP 3 support has been unsuccessful and/or declined, a Notice to Improve letter will be issued to reinforce the need for immediate improvement.

#### STEP 5 - Legal Action - No Improvement

Where there has been further unauthorised absences after a Notice to Improve letter has been issued (and the National Threshold has been met) then Legal Action (Penalty Notice or Prosecution) may be requested from the Local Authority.

#### PENALTY NOTICES & LEGAL ACTION

**1<sup>st</sup> Offence** – 10 sessions of unauthorised Absence or more = fine of £160 per parent, per child if paid within 28 days. Reduced to £80 per parent, per child if paid within 21 days.

**2<sup>nd</sup> Offence** – within 3 years = fine of £160 per parent, per child payable within 28 days, no reduction available.

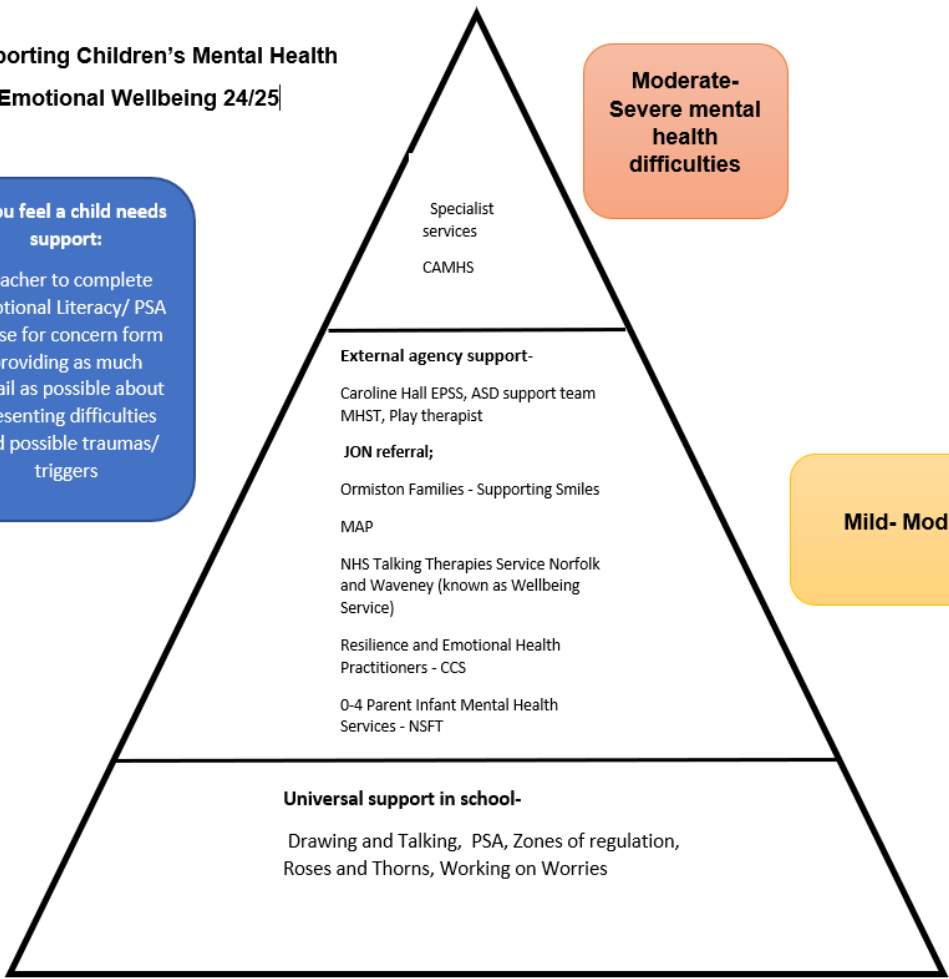
**3<sup>rd</sup> Offence** – within 3 years = No Penalty Notice considered. The case will be presented to Magistrates' Court under s444(1) or (1a) of the Education Act. If found guilty, a fine of up to £2500 per parent, per child can be issued. Convictions for s444(1a) offences will show on DBS record.

## Appendix 6: Supporting Children’s Mental Health and Emotional Wellbeing

### Supporting Children’s Mental Health and Emotional Wellbeing 24/25



**If you feel a child needs support:**  
 Teacher to complete Emotional Literacy/ PSA cause for concern form providing as much detail as possible about presenting difficulties and possible traumas/ triggers



**Moderate-Severe mental health difficulties**

**Mild- Moderate needs**

**Good mental health  
All children**